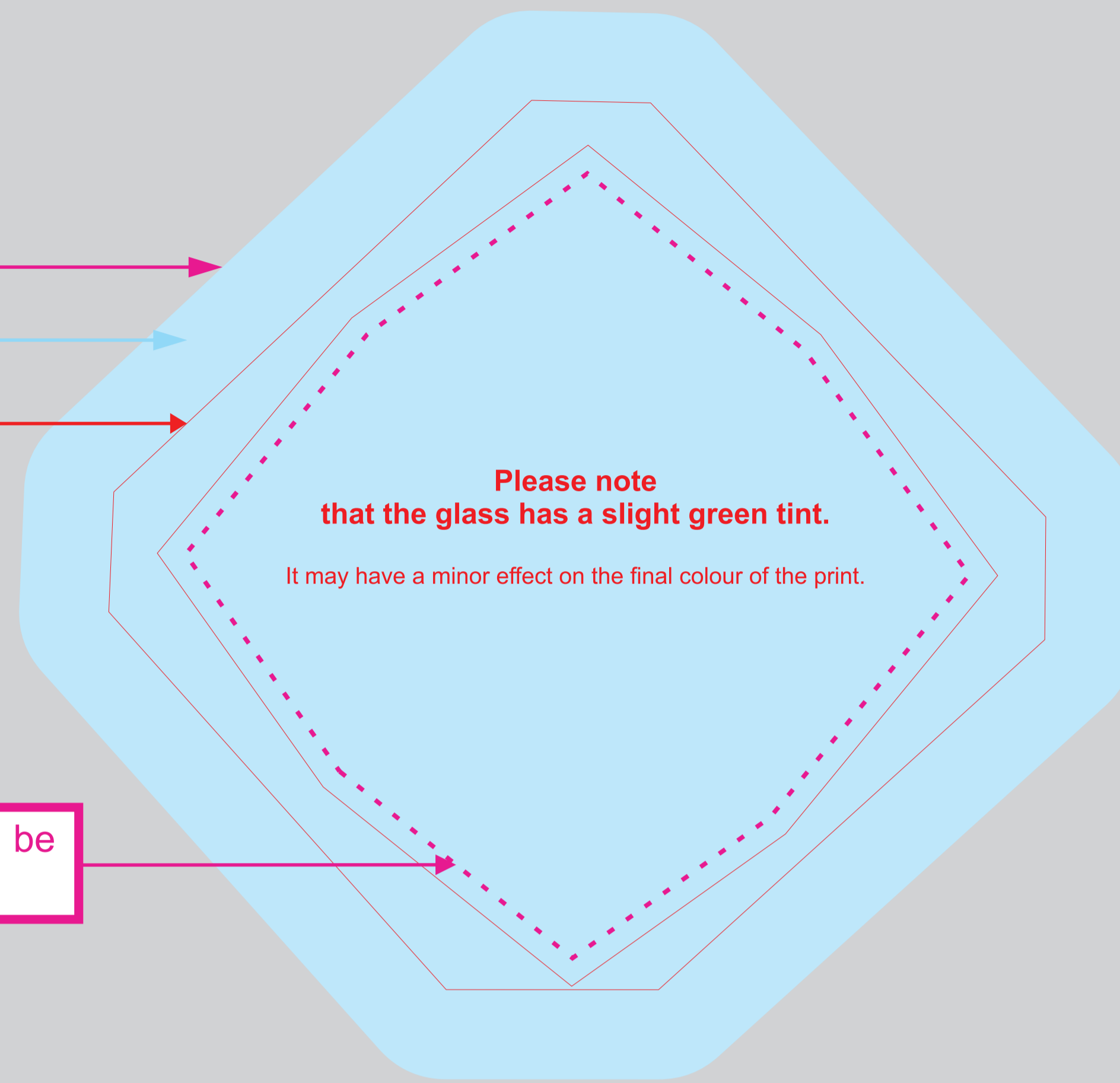


# LUXORJET

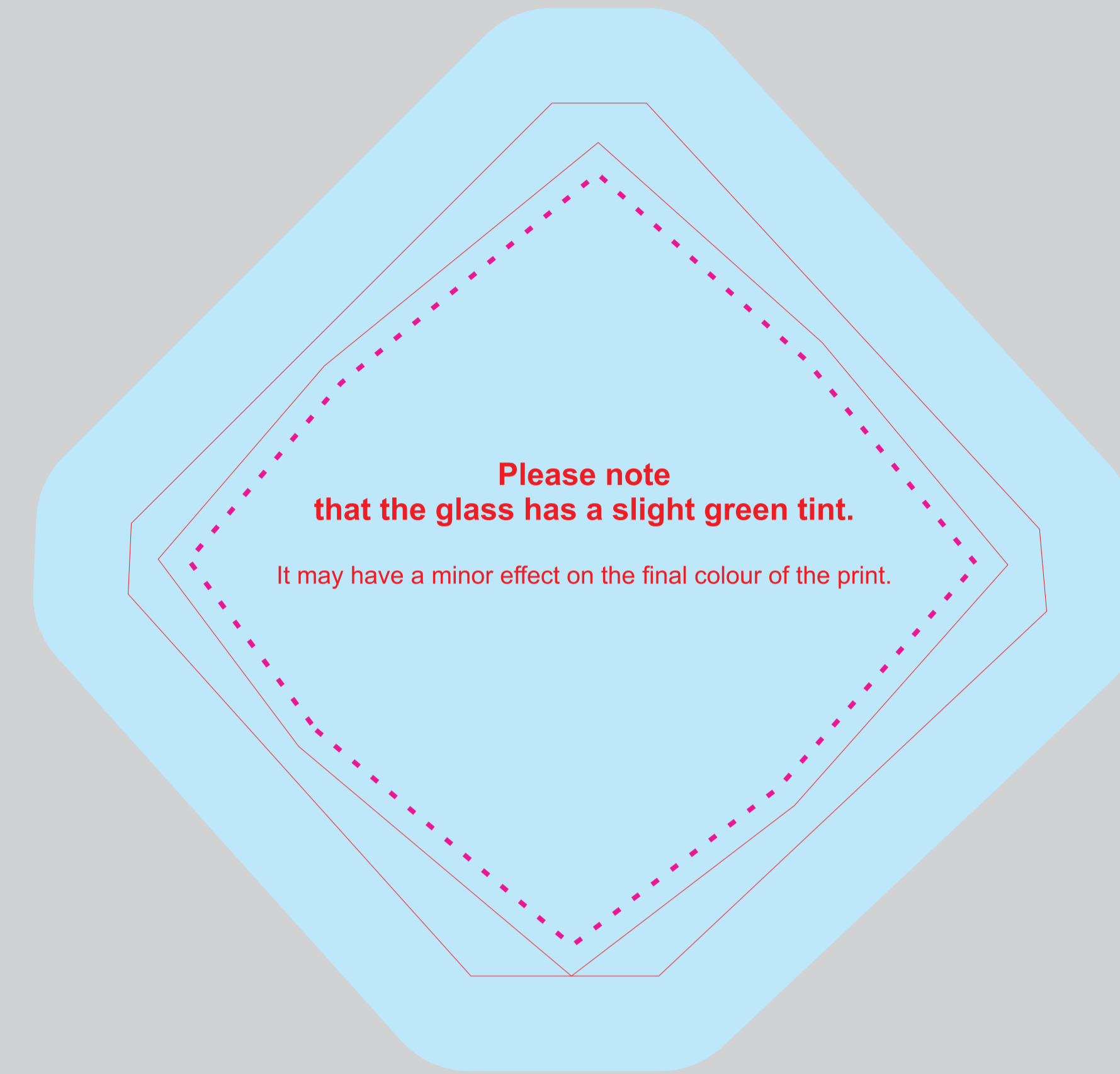
1. White colour as a background on the whole surface of the glass trophy
2. White colour as a background under the colour pixels
3. Slightly transparent colour print (without a white colour)

## Tips when preparing the artwork by yourself

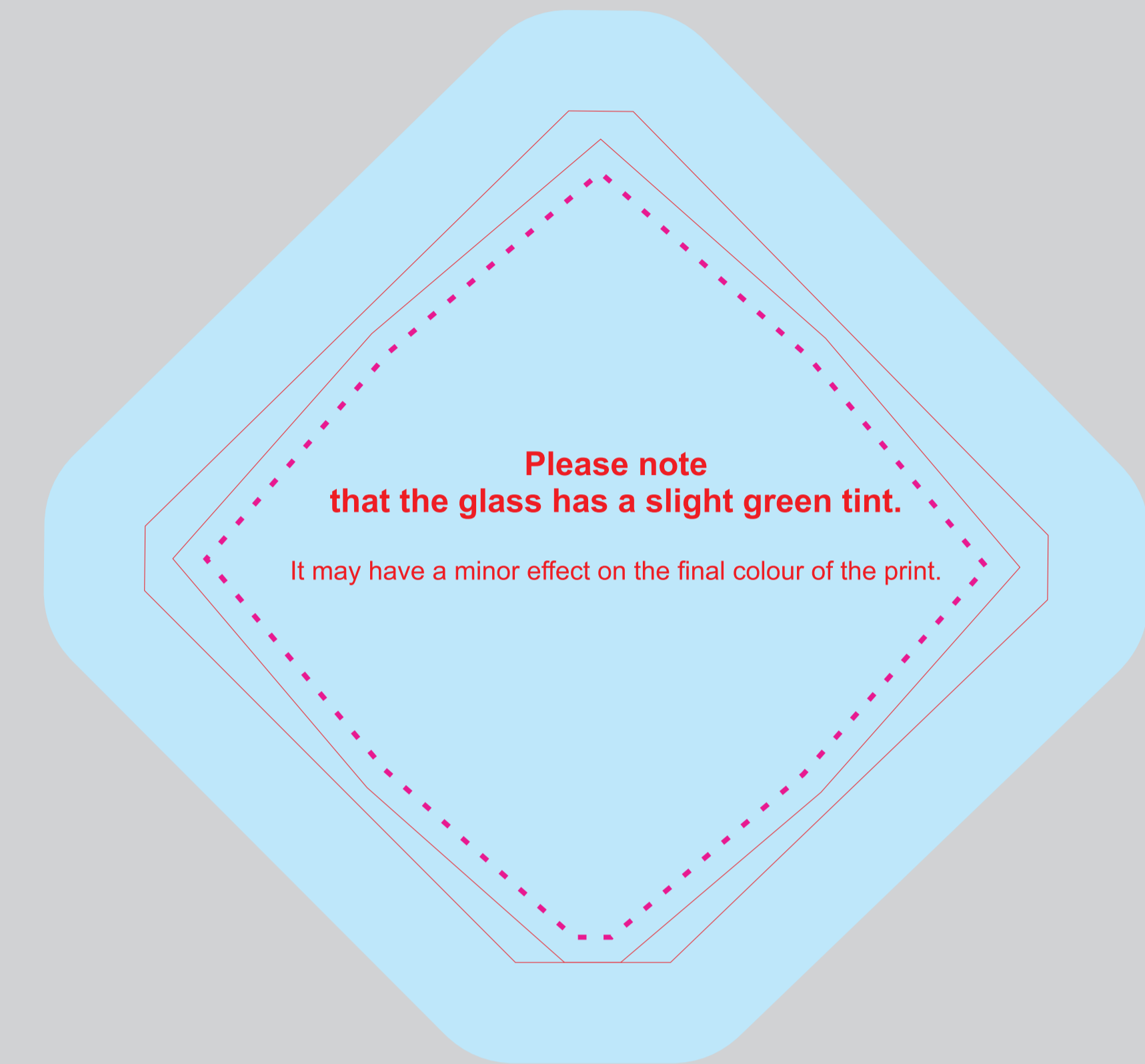
<b>LUXORJET</b>
if the coloured background has to reach the edge of the glass, extend it beyond the outline of the glass 8 mm on each side
minimum resolution for illustrations or photos 300 dpi
<b>external outline of the glass - TEMPLATE</b> please do not change the color and thickness of the line
<b>all fonts converted to curves</b>
smallest font used 8 pt
minimum thickness of lines used in the design 0.2 mm
<b>!</b> Because of manual processing of the glass trophies, template may slightly differ from the final product.



G022A



G022B



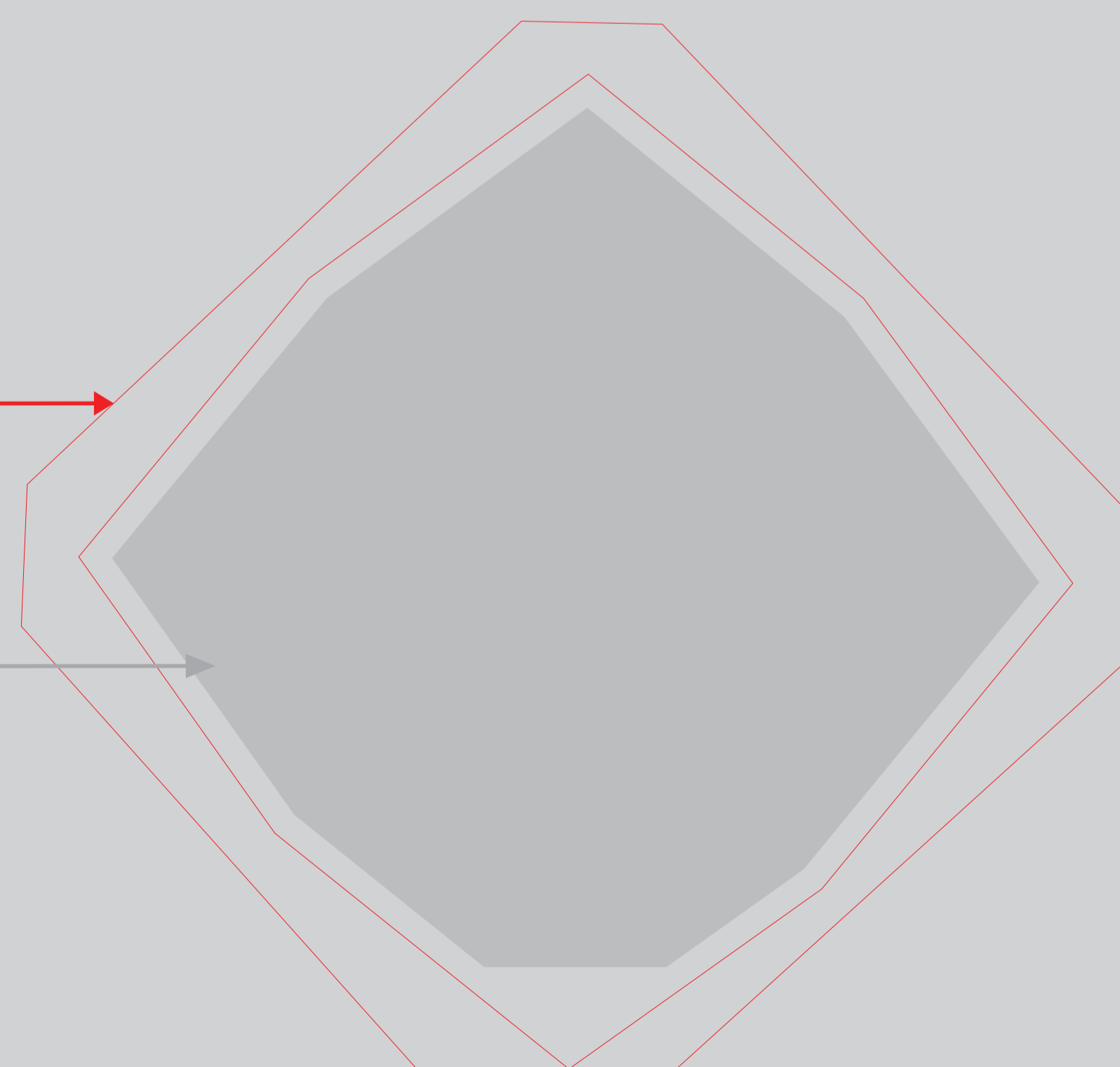
G022C

an area where essential elements should be placed, i.e. text, logo, etc.

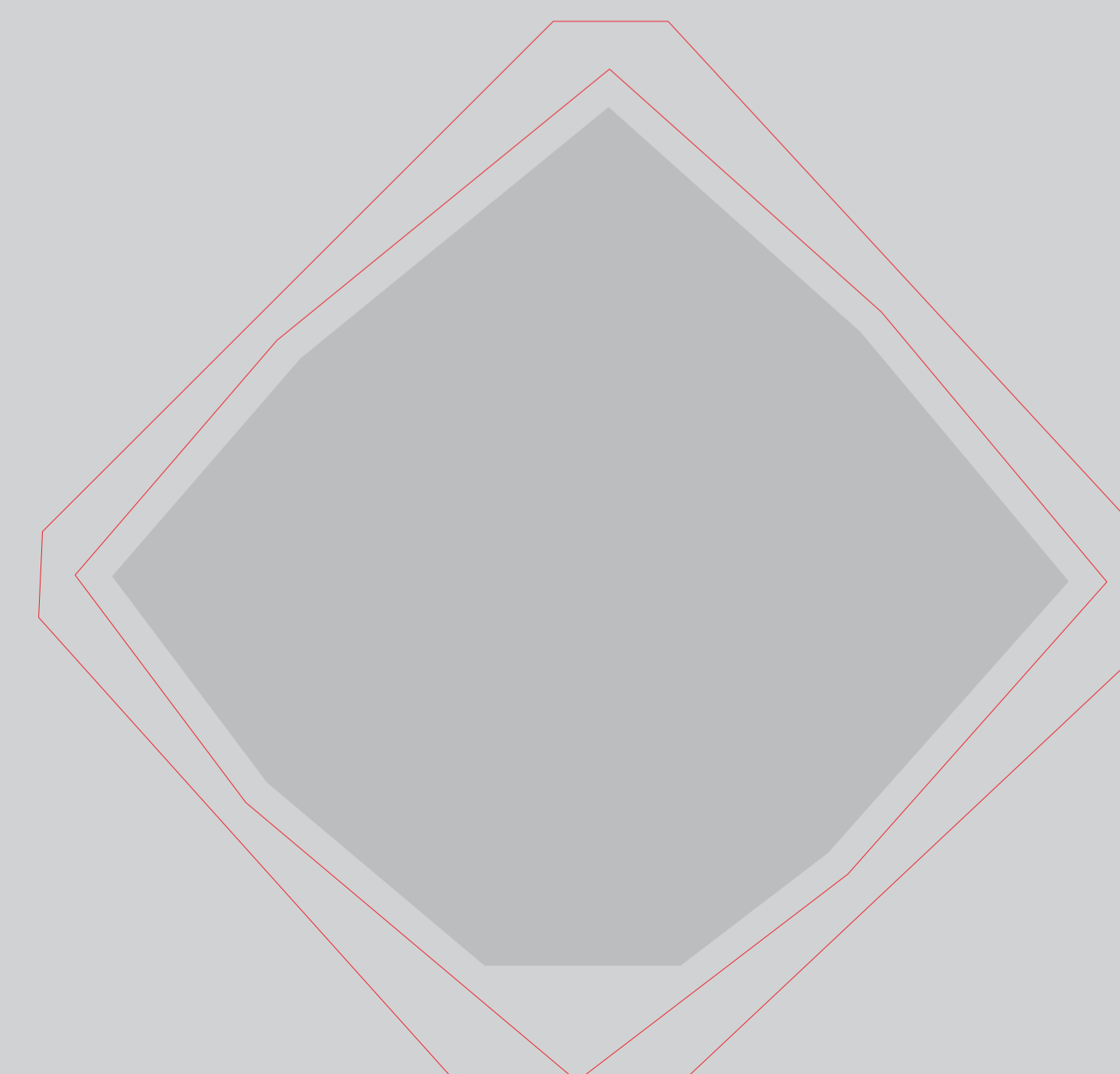
# ENGRAVING

## Tips when preparing the artwork by yourself

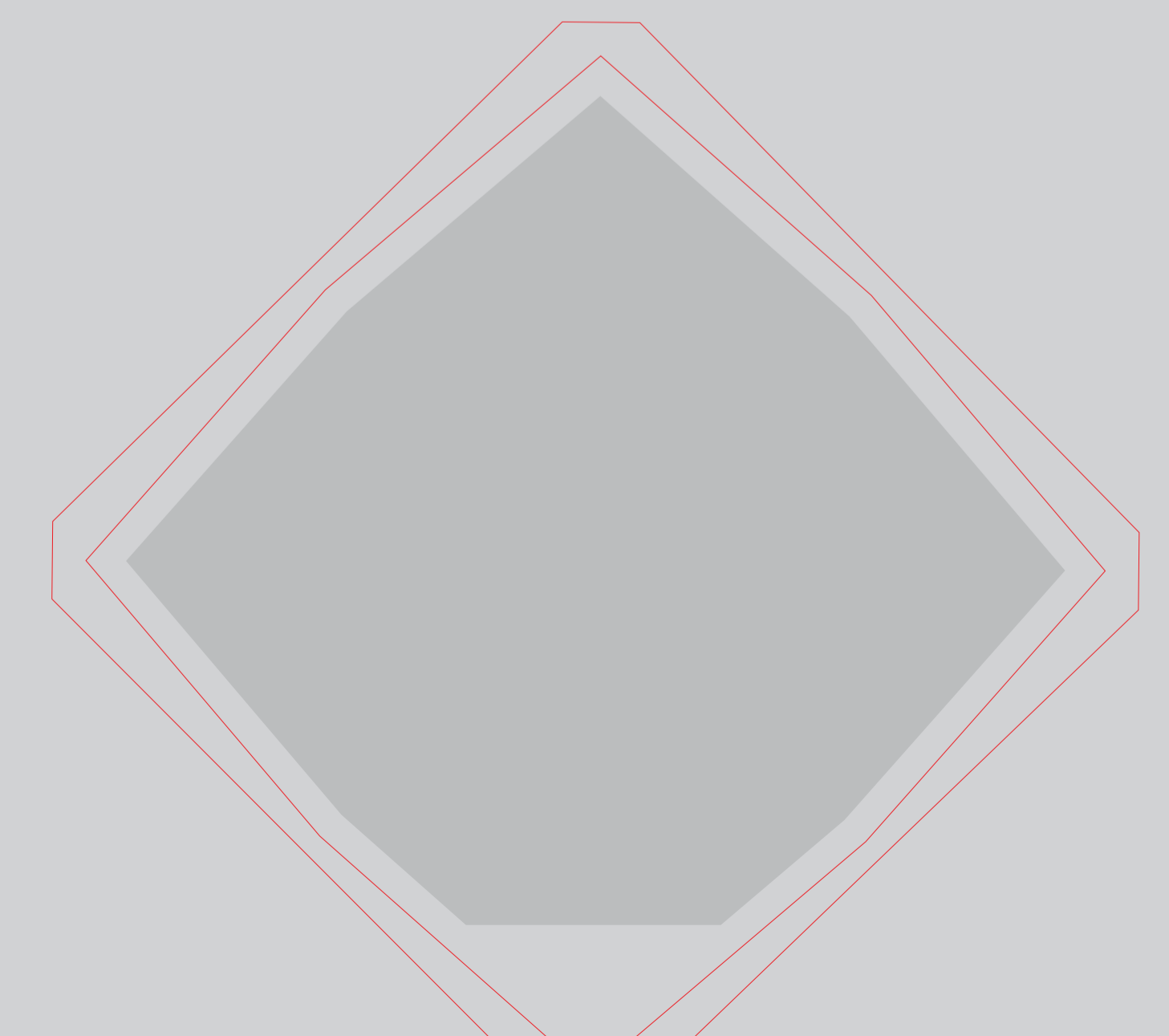
<b>external outline of the glass - TEMPLATE</b> please do not change the color and thickness of the line
<b>all fonts converted to curves</b>
smallest font used 8 pt
minimum thickness of lines used in the design 0.2 mm
<b>laser engraving area</b>
we only use vector objects (inscriptions, logos, characters )
the pattern for engraving will be prepared in gray using 70 % black in C M Y K scale
when filling with paint, please specify colour (paint palette in separate file)
distance of the lowest inscription from the base 20 mm
<b>ENGRAVING</b>
<b>!</b> Because of manual processing of the glass trophies, template may slightly differ from the final product.



G022A



G022B



G022C